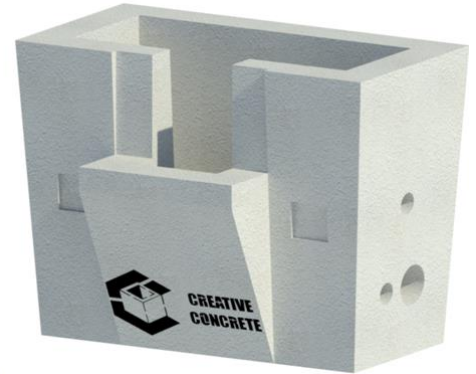


Declaration of Performance

DOP/CE/9029

ESB Micro Pillar VC1 – Public Lighting Vault
Ballinamere, Tullamore, Co. Offaly



- 1. Unique Identification code of the product - type:** Code – 9029 – ESB Micro Pillar VC1 – Public Lighting Vault
- 2. Intended use:** Reinforced Precast Component for use as an inspection Chamber
- 3. Manufacturer:** Creative Concrete, Ballinamere, Tullamore, Co. Offaly
- 4. Authorised Representative:** N/A
- 5. System of AVCP:** System 4
- 6. Harmonised Standard:** EN 1917:2002&AC:2008 **Notified body:** N/A

7. Declared Performance

Characteristic	Declared Performance	Provisions to Annex ZA (informative) of I.S EN 1917:2002
Watertightness:	No Leakage of joint or unit at 300kPa (0,3) bar internally	4.3.8
Mechanical resistance:	Vertical Strength 150kN	4.3.5
Opening Size:	(LN x WN) 750mm, 300mm Rectangular	4.3.3.5
Durability:	Adequate for normal serviceability conditions	4.3.10

8. N/A

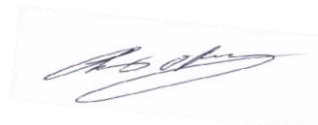
<https://creativeconcrete.ie>

The performance of the product identified above is in conformity with the set of declared performances. This declaration of performance is issued in accordance with Regulation (EU) No 305/2011, under the sole responsibility of the manufacturer identified above.

Signed for and on behalf of the manufacturer by:

Chris O'Reilly, Technical & Production Manager, Creative Concrete, Ballinamere, Tullamore, Co. Offaly

Date: 01st September 2023



CE

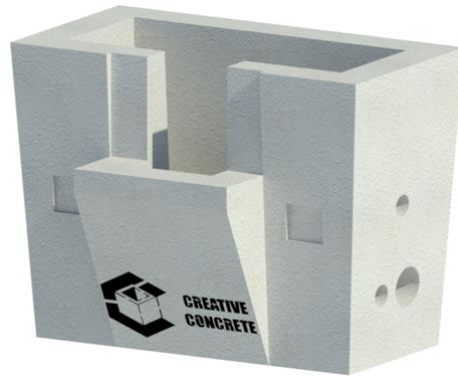
Creative Concrete

17

EN 1917:2002&AC:2008
ESB Micro Pillar VC1 – Public Lighting Vault
(LxWxH) 950mm, 500mm, 800mm

1. **Unique Identification code of the product - type:** Code – 9029 – ESB Micro Pillar VC1 – Public Lighting Vault
2. **Intended use:** Reinforced Precast Component for use as an inspection Chamber
3. **Manufacturer:** Creative Concrete, Ballinamere, Tullamore, Co. Offaly
4. **Authorised Representative:** N/A
5. **System of AVCP:** System 4
6. **Harmonised Standard:** EN 1917:2002&AC:2008 **Notified body:** N/A

Watertightness	Declared Value	No Leakage of joint or unit at 30kPa (0,3) bar) internally
Mechanical Resistance	Declared Value	Vertical Strength 150kN
Opening Size	Declared Characteristic	(LN x WN) 750mm, 300mm Rectangular
Durability	Declared Performance	Adequate for normal serviceability conditions



Signed for and on behalf of the manufacturer by:

Chris O'Reilly, Technical & Production Manager, Creative Concrete, Ballinamere, Tullamore, Co. Offaly

Date: 01st September 2023

