

## Declaration of Performance

DOP/CE/9028

**ESB Mini Pillar Vault**  
**Ballinamere, Tullamore, Co. Offaly**



- 1. Unique Identification code of the product - type:** Code – 9028 – ESB Mini Pillar Vault
- 2. Intended use:** Reinforced Precast Component for use as an inspection Chamber
- 3. Manufacturer:** Creative Concrete, Ballinamere, Tullamore, Co. Offaly
- 4. Authorised Representative:** N/A
- 5. System of AVCP:** System 4
- 6. Harmonised Standard:** EN 1917:2002&AC:2008 **Notified body:** N/A

**7. Declared Performance**

Characteristic	Declared Performance	Provisions to Annex ZA (informative) of I.S EN 1917:2002
<b>Watertightness:</b>	No Leakage of joint or unit at 30kPa (0,3 bar) internally	4.3.8
<b>Mechanical resistance:</b>	Vertical Strength 140kN	4.3.5
<b>Opening Size:</b>	(LN x WN) 1070mm, 680mm Rectangular	4.3.3.5
<b>Durability:</b>	Adequate for normal serviceability conditions	4.3.10

8. N/A

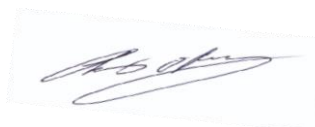
<https://creativeconcrete.ie>

The performance of the product identified above is in conformity with the set of declared performances. This declaration of performance is issued in accordance with Regulation (EU) No 305/2011, under the sole responsibility of the manufacturer identified above.

Signed for and on behalf of the manufacturer by:

**Chris O'Reilly, Technical & Production Manager, Creative Concrete, Ballinamere, Tullamore, Co. Offaly**

**Date: 01st September 2023**





**Creative Concrete**

**17**

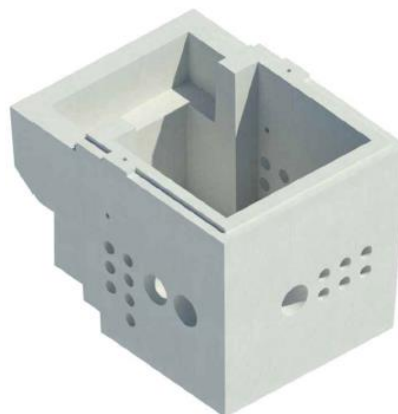
**EN 1917:2002&AC:2008**

**ESB Mini Pillar Vault**

**(LxWxH) 1270mm, 960mm, 915mm**

- 1. Unique Identification code of the product - type:** Code – 9028 – ESB Mini Pillar Vault
- 2. Intended use:** Reinforced Precast Component for use as an inspection Chamber
- 3. Manufacturer:** Creative Concrete, Ballinamere, Tullamore, Co. Offaly
- 4. Authorised Representative:** N/A
- 5. System of AVCP:** System 4
- 6. Harmonised Standard:** EN 1917:2002&AC:2008 **Notified body:** N/A

<b>Watertightness</b>	Declared Value	No Leakage of joint or unit at 30kPa (0,3) bar) internally
<b>Mechanical Resistance</b>	Declared Value	Vertical Strength 140kN
<b>Opening Size</b>	Declared Characteristic	(LN x WN) 1070mm, 680mm Rectangular
<b>Durability</b>	Declared Performance	Adequate for normal serviceability conditions



Signed for and on behalf of the manufacturer by:

**Chris O'Reilly, Technical & Production Manager, Creative Concrete, Ballinamere, Tullamore, Co. Offaly**

**Date: 01st September 2023**