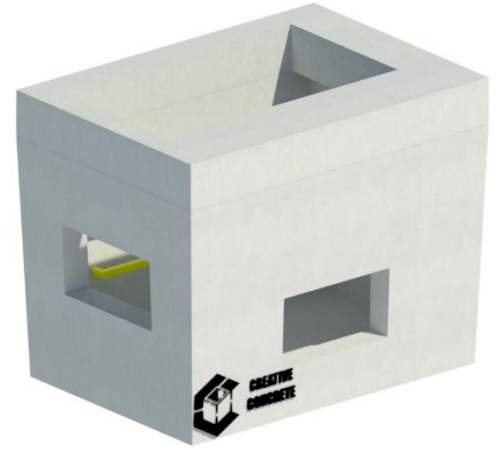


Declaration of Performance

DOP/CE/9013

Comms I Valve Chamber and Cover
Ballinamere, Tullamore, Co. Offaly



- 1. Unique Identification code of the product - type:** Code – 9013 – Comms I Valve Chamber and Cover
- 2. Intended use:** Reinforced Precast Component with installed single steps for use as an inspection Chamber
- 3. Manufacturer:** Creative Concrete, Ballinamere, Tullamore, Co. Offaly
- 4. Authorised Representative:** N/A
- 5. System of AVCP:** System 4
- 6. Harmonised Standard:** EN 1917:2002&AC:2008 **Notified body:** N/A

7. Declared Performance

Characteristic	Declared Performance	Provisions to Annex ZA (informative) of I.S EN 1917:2002
Watertightness:	No Leakage of joint or unit at 30kPa (0,3 bar) internally	4.3.8
Mechanical resistance:	Vertical Strength 400kN	4.3.5
Opening Size:	(LN x WN) 1300mm, 850mm Rectangular	4.3.3.5
Durability:	Adequate for normal serviceability conditions	4.3.10
Load bearing capacity of installed steps:	- Deflection \leq 5mm under 2 kN Vertical load, with permanent deflection \leq 1mm - Resistant to 5 kN horizontal pull-out force	4.3.7

8. N/A

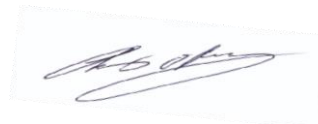
<https://creativeconcrete.ie>

The performance of the product identified above is in conformity with the set of declared performances. This declaration of performance is issued in accordance with Regulation (EU) No 305/2011, under the sole responsibility of the manufacturer identified above.

Signed for and on behalf of the manufacturer by:

Chris O'Reilly, Technical & Production Manager, Creative Concrete, Ballinamere, Tullamore, Co. Offaly

Date: 01st September 2023



CE

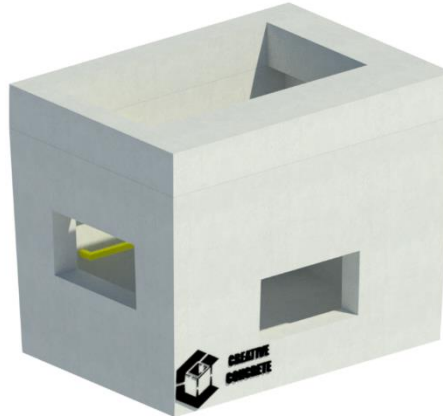
Creative Concrete

20

EN 1917:2002&AC:2008
Comms I Chamber and Cover
(LxWxH) 1550mm, 1100mm, 1025mm

1. **Unique Identification code of the product - type:** Code – 9013 – Comms I Valve Chamber and Cover
2. **Intended use:** Reinforced Precast Component with installed single steps for use as an inspection Chamber
3. **Manufacturer:** Creative Concrete, Ballinamere, Tullamore, Co. Offaly
4. **Authorised Representative:** N/A
5. **System of AVCP:** System 4
6. **Harmonised Standard:** EN 1917:2002&AC:2008 **Notified body:** N/A

Watertightness	Declared Value	No Leakage of joint or unit at 30kPa (0,3) bar) internally
Mechanical Resistance	Declared Value	Vertical Strength 400kN
Opening Size	Declared Characteristic	(LN x WN) 1300mm, 850mm Rectangular
Durability	Declared Performance	Adequate for normal serviceability conditions
Load bearing capacity of installed steps	Declared Performance	- Deflection \leq 5mm under 2 kN Vertical load, with permanent deflection \leq 1mm - Resistant to 5 kN horizontal pull-out force



Signed for and on behalf of the manufacturer by:

Chris O'Reilly, Technical & Production Manager, Creative Concrete, Ballinamere, Tullamore, Co. Offaly

Date: 01st September 2023

